

Flying Club

September 12, 2006

Powered Flight

- Means “with engine”, needs gas
- Broadly there are two types
 - Fixed wings (planes = expensive)

*But all rental
is Hobbs and
wet !*



Provincetown Municipal MITFC Flyout July 1st 2006



Hanscom AFB, MITFC Heli Fly-In Sept. 4th 2006

- Rotary wings (helicopters = very expensive)

Lawrence
(HFC)

Where to Fly

Hanscom

Sterling (GBSC)

Martha's Vineyard
&
Katama



Private Pilot Certificate

What it Takes

- 40 hours of total flight time.
- 20 hours of flight with an instructor.
- 10 hours of solo flight.
- Cross countries and solo cross countries.



Tip of the Cape at 5k ft. MITFC Flyout July 1st 2006

Also available: the new “Sport Pilot” certificate: half the time but

1) daytime VFR only 2) One passenger only 3) no more than 180HP

More than just flying the plane

- FAA written exam (aerodynamics, weather, airspaces etc.)
- Oral exam (navigation, attitude, aeronautical decision making etc.)
- “Checkride” (practical test) with an FAA examiner (emergencies, radio communications, some instrument flight etc.)



VFR on top somewhere over Texas, Spring 2004

How to Pass a Checkride

- Know your stuff!
- Don't scare the examiner
- Laugh at all of his jokes.



4.5k ft over Lake Bryan, TX Spring 2004

Hawk Flying Club

Lawrence Airport (LWM) in Lawrence, MA



Two types of aircraft available.

Located North of Boston in Lawrence. Accessible by commuter rail.

Hawk FC: Aircraft



Cessna 150

Two seat trainer

\$~45 per hour



Piper Cherokee 180

Four seat

\$~70 per hour

Hawk FC: Time and Cost

Upfront membership cost*	\$600
Monthly dues	\$35
Books and charts	\$150
25 hours with instructor	\$1750
25 hours solo	\$1000
Other Instruction	\$300
FAA written test and checkride	\$400
Equipment (headphones/E6B/leather jacket)	~\$300
Total	~\$4000

Fly often! At four hours per week, you can get your license in about three months.

Other Places to rent and learn: East Coast Aero Club and Executive Flyers at Hanscom (BED)

East Coast Aero Club rents a wide range of single-engine aircraft, including small training airplanes, complex airplanes, two multi-engine airplanes, and one simulator. Aircraft Photographs Instruction Rates

Rental Rates

Year	Aircraft Type	Wet Hourly Rate
1982	Piper Tomahawk	\$80
1998	Diamond Katana	\$85
2005	Diamond Eclipse	\$110
1974-80	Piper Warrior	\$105
1999	Piper Warrior	\$115
1973-4	Cessna 172	\$105
1989	Piper Arrow	\$129
1998	Piper Arrow	\$139
2005	Diamond Star	\$150
1989	Piper Seminole	\$220
2005	Robinson R22	\$200
2006	Robinson R44	\$309 (\$299 check/debit)
	Simulator AST 300	\$35

MassPort fee of 2 1/2 % is included in our rates if enrolled in a training program.

Discount Pricing

Aircraft Type	Deposit	Account Bonus
Tomahawk, Katana, Warrior, Skyhawk	\$2000 or greater	\$100 or 5%
Arrow	\$2500 or greater	\$125 or 5%
Seminole	\$4000 or greater	\$200 or 5%

Bonus for cash, check, or debit deposits only.

Bonus does not apply to one time rentals. Bonus must be used and cannot be refunded as cash.

Aircraft Rental Rates

EFA's Cessna Authorized Service Hangar maintains our fleet to the highest standards of airworthiness. Our dedicated Line Crew clean and fuel aircraft for your departure. Rental rates are "wet" (full fuel) calculated from Hobbs meter. Fuel purchases from other airfields may be credited to renter.

Seats	Aircraft Make & Model	Avionics	HP	Per Hour
2	Cessna 152	VFR	110	\$87
4	Cessna 172	IFR - Loran or GPS	150/160	\$103
4	Cessna 172S/G1000	IFR - GPS, A/P, MFD, Datalink Weather, TIS	180	\$124
4	Cessna 182/S/T/G1000	IFR - GPS, A/P, MFD, Datalink Weather	230	\$155
4	Piper PA28 Warrior	IFR - GPS, DME	160	\$98
4	Piper PA28R Arrow (Complex)	IFR - GPS	200	\$119
4	Piper Seminole PA44-180 (Multi)	IFR - EFIS, GPS, A/P	180 ea	\$225
2	Decathlon (Aerobatic Trainer)	VFR	180	\$154
4	Cirrus SR20	PFD/MFD, GPS, AP	200	190
-	Simulator (Elite PCATD)	VFR / IFR	n/a	\$35

Flight Instructor Rates

EFA Flight Instructors are full time professionals who are rigorously trained to deliver over four decades of advanced aviation training experience.

Flight Training	In EFA Aircraft	In Customer Aircraft *
Private / INSTR / COMM / CFI	\$48/hour	\$65/hour
Full Day Hire **	\$350/day	\$450/day
Aerobatics / Multi-Engine / ATP	\$53/hour	\$85/hour
Full Day Hire **	\$390/day	\$550/day
Ground Instruction	\$48/hour	\$48/hour
Instr Fast Track - Full Day Hire	\$350/day	\$400/day
Instr Fast Track - Half Day Hire	\$175/day	\$200/day
Michael Goulian	\$100/hour	\$120/hour

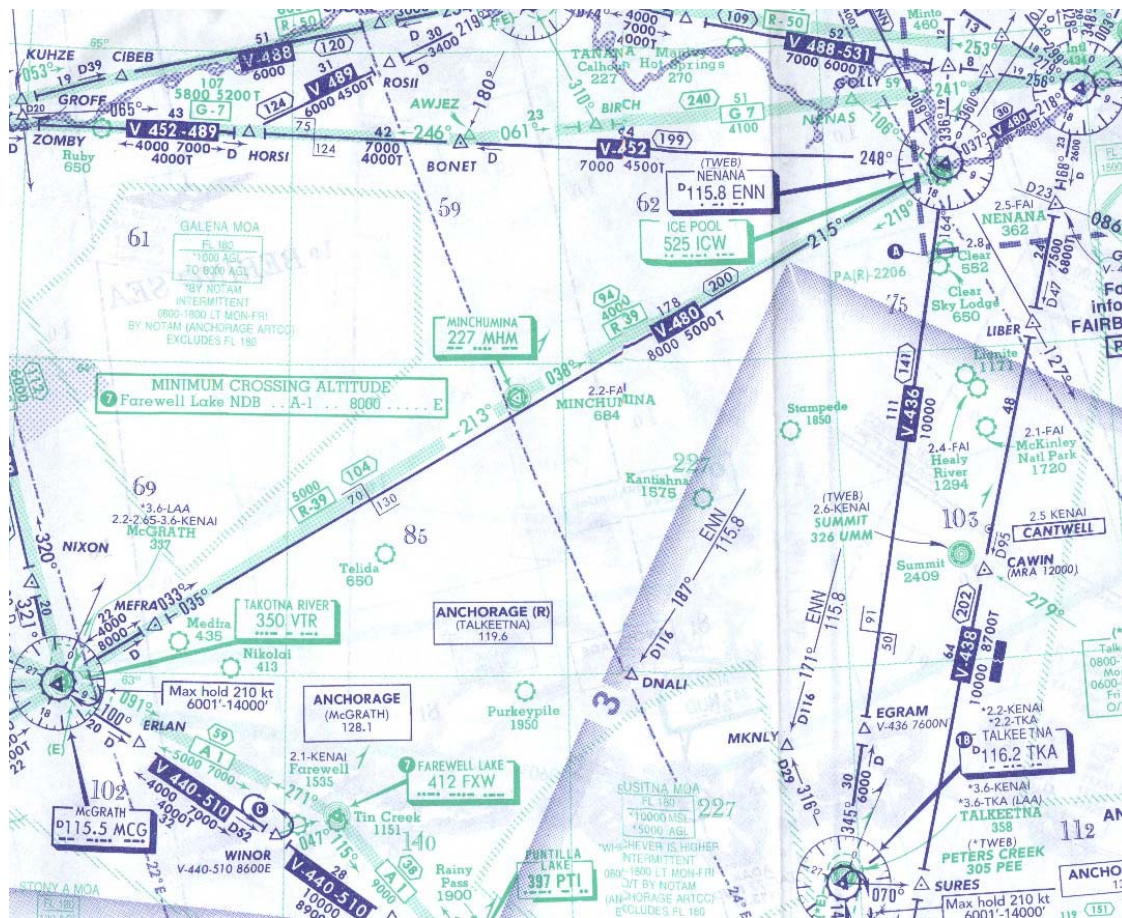
* Pilots who train in their own aircraft must arrange to have EFA listed as a named insured party and have their insurance carrier issue a waiver of subrogation (this is a common practice for most insured, who do so to encourage training)

** Plus expenses

Sterling Aviation at 3B3: C150=\$60, C172=\$85, Instruction = \$28

Cross Country Flying

- Fly places.
- Meet people.
- Get lunch.



Competitions and Fly-Ins

- Reno Air Races at Reno/Tahoe airport in Reno, NV
- AirVenture at Wittman airport in Oshkosh, WI



Additional Ratings



- Learn to fly in the clouds.
- Learn to fly new types of airplanes such as multi-engine airplanes, seaplanes, taildraggers.

Questions?

(P) = Problem/squawk written by pilot (S) = Solution written by mechanic

- (P) Left inside main tire almost needs replacement (S) Almost replaced left inside main tire
- (P) Test flight OK, except autoland very rough (S) Autoland not installed on this aircraft
- (P) #2 Propeller seeping prop fluid (S) #2 Propeller seepage normal - 1,3 and 4 propellers lack normal seepage
- (P) Something loose in cockpit (S) Something tightened in cockpit
- (P) Evidence of leak on right main landing gear (S) Evidence removed
- (P) DME volume unbelievably loud (S) Volume set to more believable level
- (P) Dead bugs on windshield (S) Live bugs on order
- (P) Friction locks cause throttle levers to stick (S) That's what they're there for
- (P) Number three engine missing (S) Engine found on right wing after brief search
- (P) Aircraft handles funny (S) Aircraft warned to straighten up, "fly right" and be serious
- (P) Target Radar hums (S) Reprogrammed Target Radar with the lyrics

Cause of crash: "Control column actuator malfunction"